

# PecGen®

## PECTAB GENERATOR

&

## ARCHIVE / LIBRARY SYSTEM

### with WEB connection possibility

#### NOTICE

##### Confidentiality and Copyright.

This document is the property of Nosewheel Inc.

This is a Nosewheel Inc. confidential document. All information contained in this document is provided in strict confidentiality for the sole purpose of installing and administrating the system complex. The information in this document shall not be used for any other purpose other than as referred to above. This document must not be disclosed, either wholly or in part, to any other party except to the system Licencee and his staff involved, without prior written permission from Nosewheel Inc.

**Disclaimer.** All brand names and product names in this document are trade marks, service marks, trademarks, or registered trade marks of their respective owners. Nosewheel Inc. is not associated with any product or vendor mentioned in this document. Nosewheel Inc. shall not be held liable for products, techniques or names mentioned herein which are trade names, service marks, trademarks or registered trade marks or otherwise protected by law.

SITATEX is a trademark of Soci t  Internationale de Telecommunications A ronautiques  
MS and Windows are trademarks, and MS-DOS and Microsoft are registered trademarks of Microsoft Corporation.  
IBM is a registered trademark of International Business Machines Corporation.  
PKZIP and PKUNZIP are registered trademarks of PKWARE Inc.  
Oracle is a registered trademark of Oracle Corporation.  
AEA is a registered trademark of Association European Airlines.

# PecGen®

## PECTAB GENERATOR

&

## ARCHIVE / LIBRARY SYSTEM

### with WEB connection possibility

The PecGen system provides computer support to gain efficiency, reliability and **RAD** (Rapid Development Tool) in generating Pectabs according to the **Parametric Data Concept standards**.

PecGen's Archive and Library has organized the Pectabs and the design information, in Pectab-Types, Versions, Owners, etc. in the **PecGen Archive/Library**.

PecGen supports the creation and organization of pectab files, for the purpose to download on pectab print devices for **Ticketing, Boarding Pass, Baggage Tag, and miscellaneous formats**.

PecGen is delivered with a full-scale **IATA Pectab Template Gallery** - according to the PSC specifications.

PecGen is a modern PC client/server WinNT/2K/ME/9x based application – with “state of the art” graphic creation tools. A special multi-platform version can be ordered, see 1. Topology.

PecGen has an access controlled **WEB interface** to the PecGen Archive/Library.

PecGen is **browser and object oriented**.

PecGen may have more functionality than described when delivered, according to the specification and description below.

#### CONTENTS:

1. TOPOLOGY
2. FUNCTIONS and SPECIFICATION
3. DOCUMENTATION
4. TRAINING



## 1. TOPOLOGY

PecGen has to be installed on a WinNT/9x/2K/ME platform.

A special multi-platform version can be ordered, for Windows (WinNT/2K/ME/9x), LINUX, UNIX (all derivatives), Solaris, HP-UX, AIX, Irix, Compaq Tru64 UNIX, AS/400, OS/390, with three-tiered client/server, and CORBA.

PecGen is available in

- a) Single-User mode with Pectabs and design info on files.
- b) Single-User mode with Pectabs and design info on database and files (down- and up-load).
- c) Client/Server mode with Pectabs and design info on database, and central and local files (down- and upload).

with the possibility to up-/download pectab-files direct from the WEB.

Regardless the pectab archive/library organization mode chosen, file-based or database store, exactly the same browser functionality is available. The default database is ORACLE 7/8/8i.

The information-store contains design, configuration, test, user and pectab data.



**2. FUNCTIONS and SPECIFICATION**

The system is delivered in English.

The functionality is based upon

A) The layout - Type:

- Ticketing (ATB),
- Boarding Pass,
- Baggage Tag, and
- miscellaneous formats



B) The pectab Mode/Version:

- AEA01, AEA99, AEA95, AEA93, AEA Not defined
- SITA CuteNT, CuteOS, Cute2, Generic, SITA Not defined
- Airline Application (proprietary), IER Generic, Others

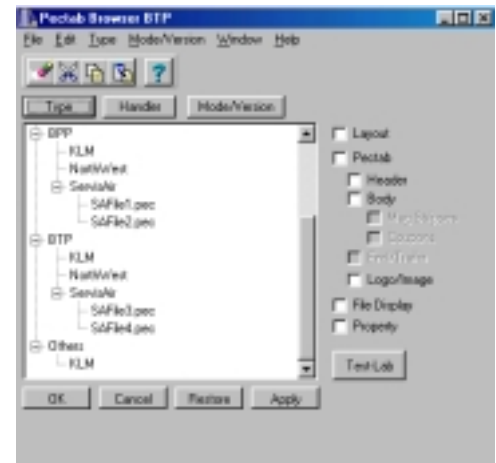
The system is browser and object oriented, and may have more functionality than described below. All handy tools, drag, drop, cut, and paste are available.



**ARCHIVE/LIBRARY - BROWSER TREEVIEW**

The pectab files are in a library browser-tree view organized and can be displayed in:

- a) Type (ATB, BPP, BTP, etc.) tree view,
- b) Handler (Handling company) tree view,
- c) Mode/Version, and
- d) user decided tree view's.



**NEW – MOVE – COPY - DELETE** functions are available.

- 1) As an browser object,
- 2) A toolbar and
- 3) As a right-click mouse menu function.



**WORKSPACE and THUMBNAIL**

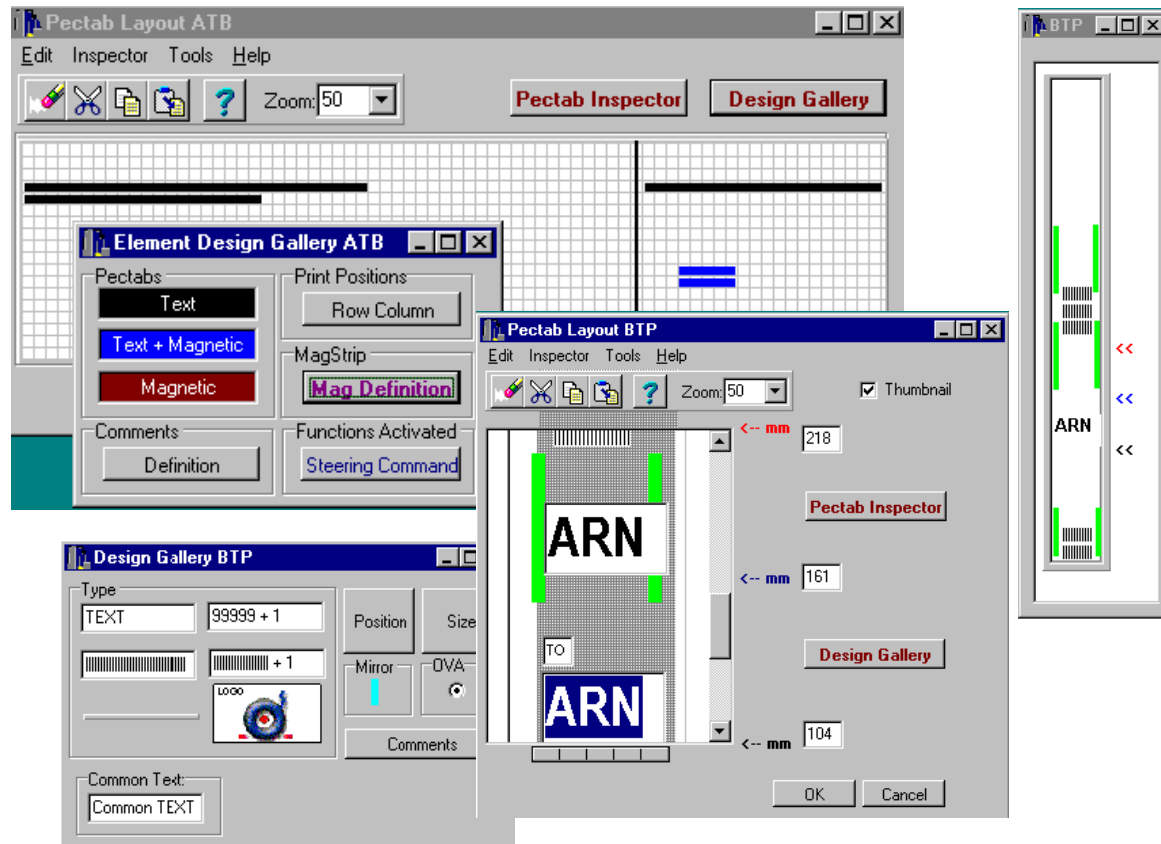
The pectab information is displayed and available

- 1) In a Workspace - pectab definition - area and
- 2) As Thumbnail - total overview - of the final document.

**LAYOUT** (for design and control reason)

- Select
- 1) The pectab from the browser or
  - 2) In new creation mode select:
    - a) A template or
    - b) The layout, needed: Baggage Tag, Boarding Pass, Ticketing, and Other-Format.

A full-scale template-gallery, with the IATA PSC proposed pectab layouts, is supplied and continuously updated.



**WORKSPACE**

The pectab information and Workspace is structured in:

- Header
- Body
- End/Trailer (if applicable), and
- Identification/Comments part.

**THUMBNAIL**

The Thumbnail displays - real time - the document with prior created and random selected "appropriate" data.



**HEADER**

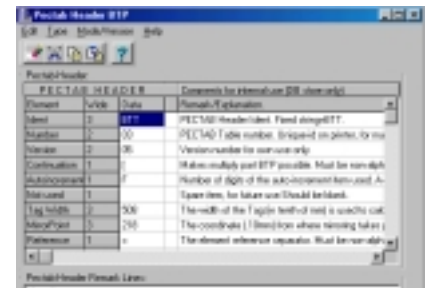
The header description is displayed - or recommended (new) - in a user friendly guided grid and the Pectab Inspector.

**TYPE**

Select the pectab type required:  
ATB, PT, BTT, BGR and Others

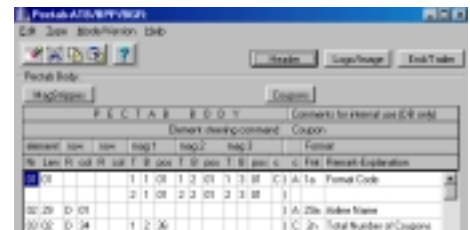
**MODE and VERSION**

Select the pectab mode and version required:  
AEA01, AEA99, AEA95, AEA93, AEA Not defined  
SITA CuteNT, CuteOS, Cute2, Generic, SITA Not defined  
Airline Application (proprietary), IER Generic, Others



**BODY**

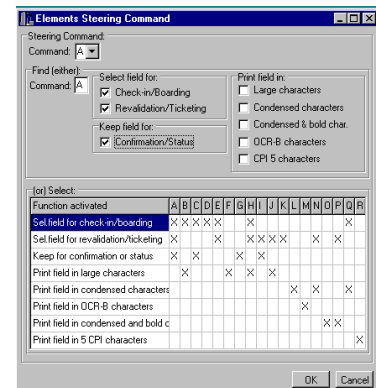
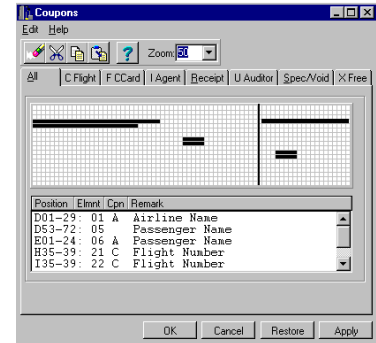
The body description is displayed - or recommended (new) - in a user friendly guided grid and the Pectab Inspector.



**DESIGN - DRAW**

The workspace area allows:

- To decide the document LAYOUT – by drag & drop of the format border lines – according to the layout chosen –
- Decide the MIRROR area – if applicable – by drawing boxes and/or entry of position definitions,
- Place elements – by drawing boxes and/or entry of position definitions,
  - o TEXT-BOXES: for common/constant data, numeric-items and separation lines font, size H/W, direction/rotation, inverting (object oriented default values are proposed)
  - o BAR CODE: for common/constant data and tag-id, type, size H/W, ratio, magnification (object oriented default values are proposed)
  - o LOGO / GRAPHICS: predefined – down line loaded ident, direction/rotation and inverting if applicable (object oriented default values are proposed)
- View and check/warning mode – is supported.
- Organize and sorting – supported.
- Attributes control for multi-elements, under modify and create, is supported.



**COMPONENT DESIGN (LOGO, GRAPHIC, IMAGE)**

A Logo-Gallery is organized.

Import, export and link – to professional image handling tool is provided.

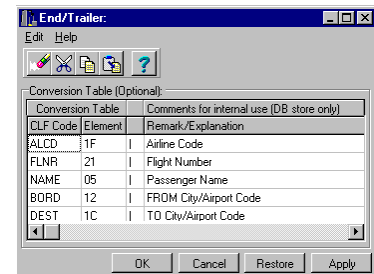
Select New or Open of components.

Move, Copy and Delete – as an object and menu function – according to browser standard – available.



**END/TRAILER (if applicable)**

The end/trailer description is displayed - or recommended (new) - in a user friendly guided grid and the Pectab Inspector - for ATB, PT only.



## IDENTIFICATION/COMMENTS

The identification and comments of the pectab definition is displayed - or recommended (new) - in a user friendly guided grid - on the belonging same pectab definition line.

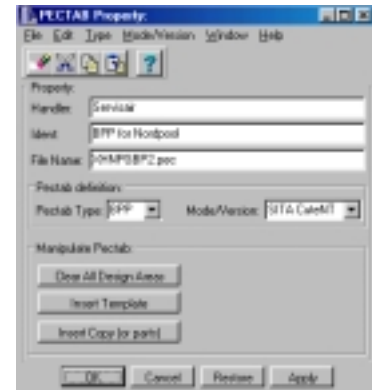
## PECTAB ANALYZE

A pectab analyze function - for backwards compatibility - is available. The function analyzes the pectab and recommends the identification and comments, if possible.



## ARCHIVE/LIBRARY - FILE SAVE

Final definition of the pectab file and contents, the pectab mode, the platform for use and the device vendor is supported on a database or file base archive/library.



## WEB INTERFACE

PecGen provides a WEB interface for up- and download of PECTAB-files and information.



## PECTAB LAB

A backoffice-link to the Pectab printing device – if applicable – is provided in AEA and SITA CUTE mode. A SITA CUTE direct interface - via the PecGen test-lab connection - is supplied.



## 3. DOCUMENTATION

A user-guide, with system overview, installation and technical references is provided, in English.



## 4. TRAINING

A 1-2 days user-training course is available.

The training will focus on efficient use of PecGen and is held in English, at your or our location.

